

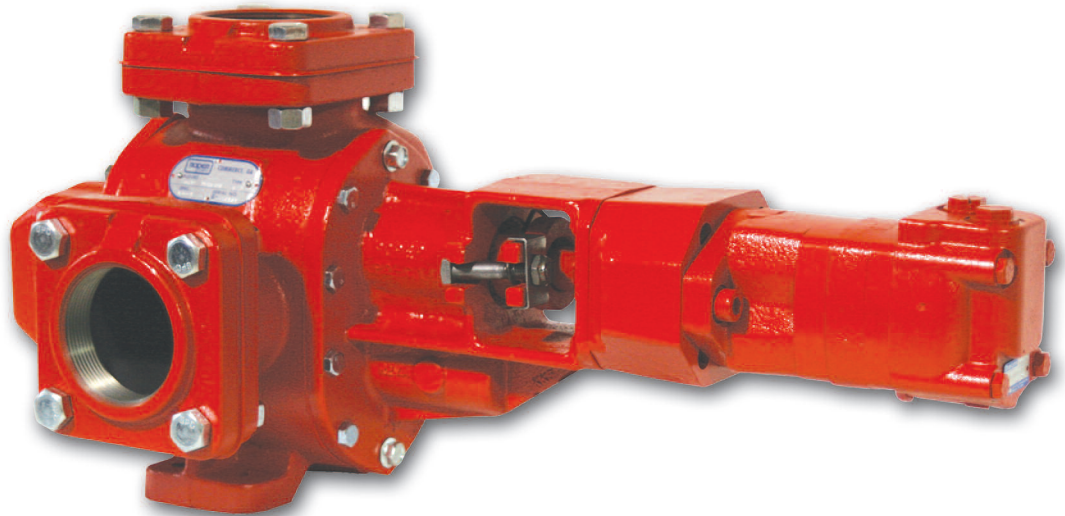
Hydraulic Motor Assembly



THE LEADING FORCE behind liquids™ since 1857

FEATURES:

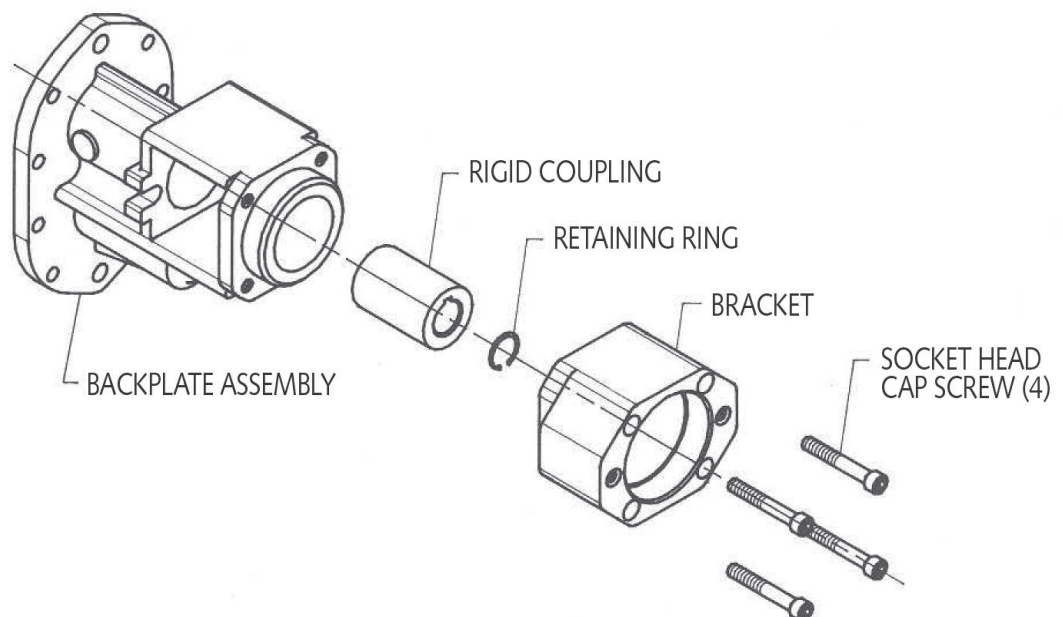
- Rigid coupling eliminates alignment difficulties.
- Reduced weight and length over split bracket assemblies.
- Adapts to existing Roper 3611-3622 and 3648 pumps.
- Economical solution for mounting hydraulic motors.
- SAE A and B two bolt flange mount on the 3611-3622.
- SAE B four bolt flange mount on the 3648.
- Rugged construction.
- Simple design.
- Easy to maintain.



BRACKET ASSEMBLY:

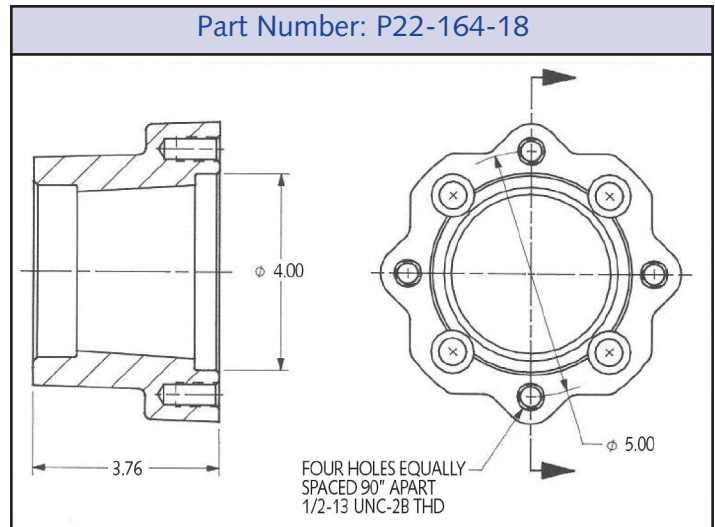
Bracket assemblies are available which include the following:

- backplate with bushings
- mounting bracket
- rigid coupling
- hardware

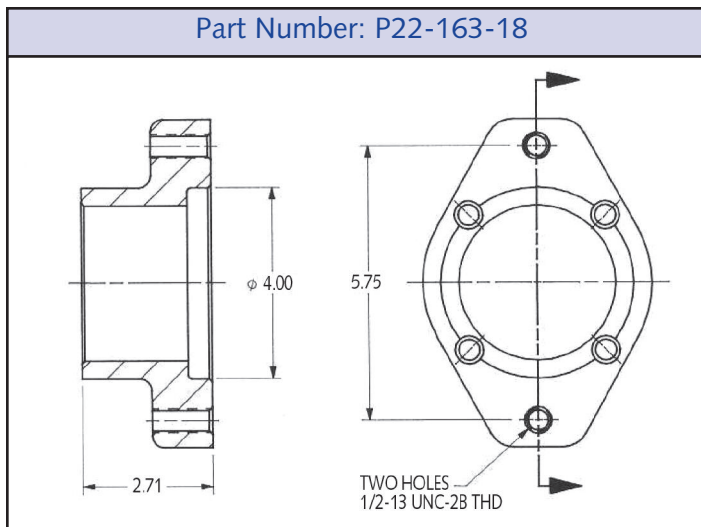


Hydraulic Motor Assembly

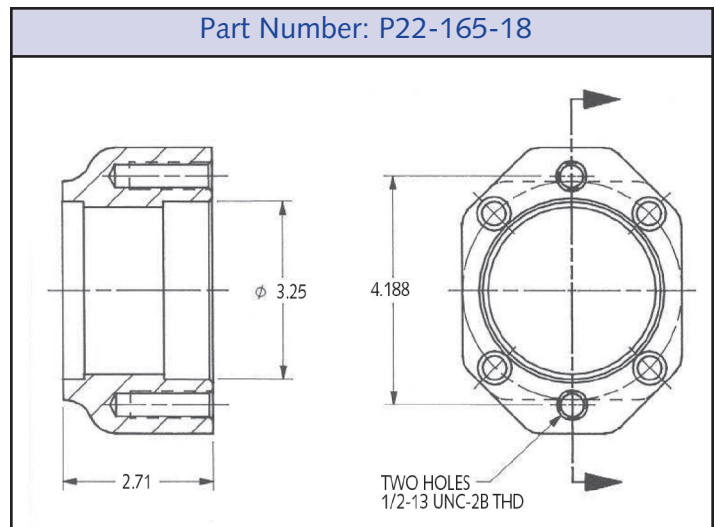
BRACKET DIMENSIONS



3648 Bracket ■ SAE B, Four Bolt



3611-3622 Bracket ■ SAE B, Two Bolt



3611-3622 Bracket ■ SAE A, Two Bolt

Consult your local Roper distributor or Roper Pump Company for additional Information

Manufactured in the USA



Roper Pump Company

PO Box 269
Commerce, GA 30529 USA

Customer Service: (706) 336-3359
Technical Support: (706) 336-3334
Fax: (706) 335-5490

sales@roperpumps.com
www.roperpumps.com

©2008 by Roper Pump Company

Roper Pump® is a registered trademarks of Roper Pump Company.
THE LEADING FORCE behind liquids™ is a trademark of Roper Pump Company

DOC# FL-HD3600-E-R1

POLAR THE TANK PROS
SERVICE CENTERS

polarservicecenters.com