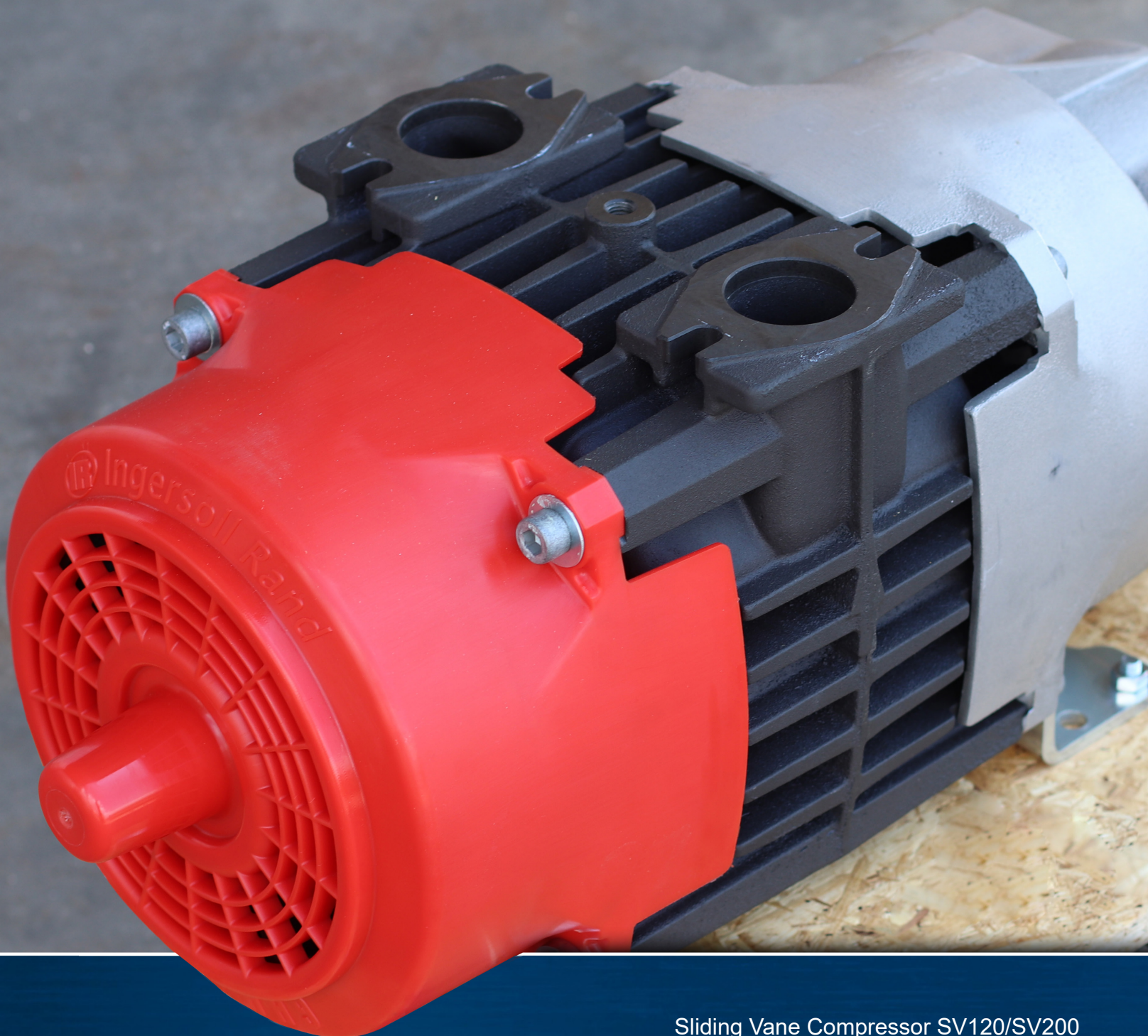


SLIDING VANE COMPRESSOR PARTS CATALOG



Sliding Vane Compressor SV120/SV200

SLIDING VANE COMPRESSOR PARTS

Direct Drive / Hydraulic Drive

Suction air filter Europiclon with rain cap

Part Number: C23331630

Weight: 2.5 lbs

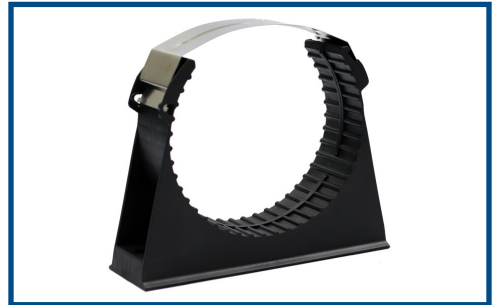


Direct Drive / Hydraulic Drive

Bracket for air filter

Part Number: C23331648

Weight: 1.0 lbs



Direct Drive / Hydraulic Drive

Flexible coupling for hydraulic drive

Part Number: 23467558

Weight: 3.0 lbs



Hydraulic Drive

Hub for flexible coupling

Part Number: C23487424

Weight: 1.5 lbs



Visit us at www.polarservicecenters.com

Like us on Facebook and follow us on Instagram @polarservicecenters #polarservicecenters

SLIDING VANE COMPRESSOR PARTS

Hydraulic Drive

Hub for flexible coupling

Part Number: C23487416

Weight: 1.0 lbs

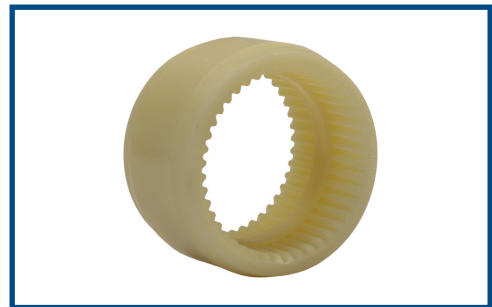


Hydraulic Drive

M sleeve for flexible coupling

Part Number: 23487408

Weight: 2.0 oz

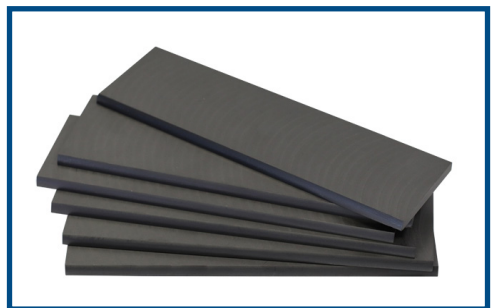


Direct Drive / Hydraulic Drive

Vane kit (set of 6 pieces)

Part Number: C23638372

Weight: 1.5 lbs



Direct Drive / Hydraulic Drive

Repair kit

Part Number: C23523012



SLIDING VANE COMPRESSOR PARTS

Side plate SV120 compressor

Part Number: C23195068

Weight: 3 lbs



Direct Drive / Hydraulic Drive

Bearing grease

Part Number: C23537509



Safety relief valve

Part Number: 38470894

Weight: 3.5 lbs



SV200 filter & flange kit

Part Number: 17929899

Weight: 6.5 lbs



Visit us at www.polarservicecenters.com

Like us on Facebook and follow us on Instagram @polarservicecenters #polarservicecenters

SLIDING VANE COMPRESSOR PARTS

Hydraulic Drive

SV200 hydraulic drive with filter kit

Part Number: SV200USCHD

Weight (approx.) 86 lbs

* weight without hydraulic motor (option)



Dimensions (approx.)

Length	21.5"
Width	9.1"
Height	9.6"

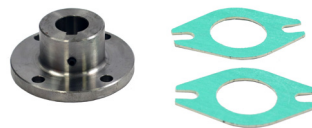


Direct Drive

SV200 direct drive compressor only

Part Number: SV200DD

Weight (approx.) 82 lbs



Dimensions (approx.)

Length	19.4"
Width	9.1"
Height	9.6"



Hydraulic Drive

SV200 with hydraulic trunk and coupler

Part Number: SV200HD

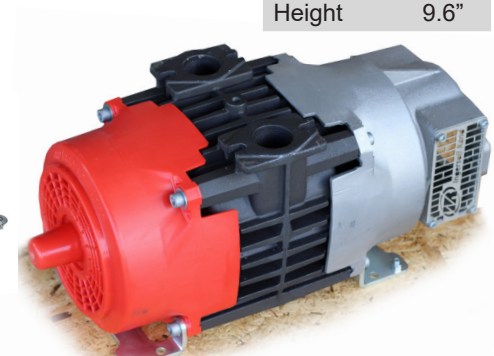
Weight (approx.) 86 lbs

* weight without hydraulic motor (option)



Dimensions (approx.)

Length	21.5"
Width	9.1"
Height	9.6"



Our industry-leading inventory includes products from major OEMs and the highest quality aftermarket manufacturers. Whether it's a common item or a hard-to-find part, our mission is to keep your fleet moving.